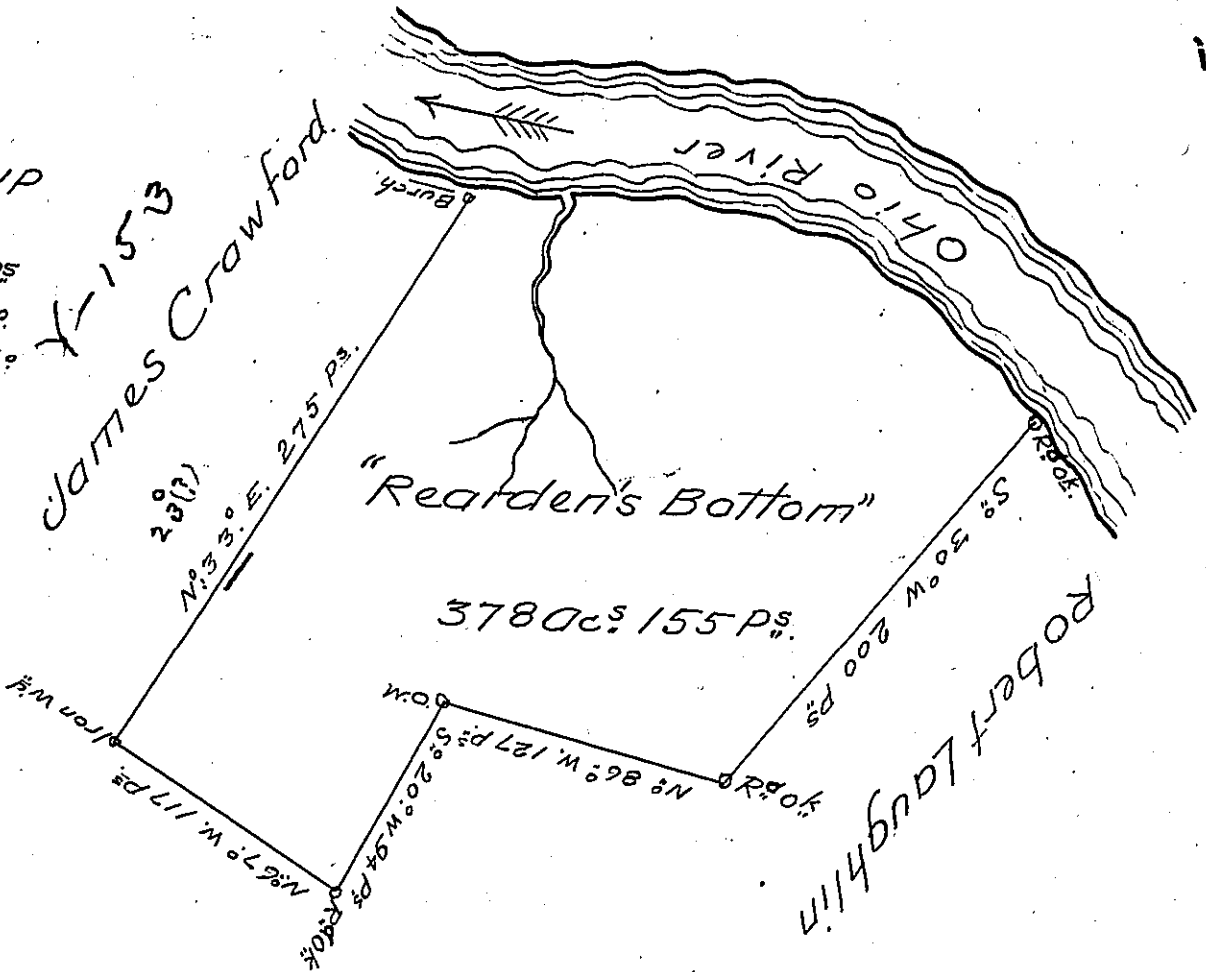


USE → 216  
 (see D. 45. 38)  
 Greene →  
 BEAVER ✓

Courses of up  
 ye River  
 N° 80° E. 61 P<sup>s</sup>  
 East - 102 D°  
 S° 60° E 112 D°



A Draught of a Survey called "Rearden's Bottom" on the Ohio River Washington County contain 3780 acs 155 P<sup>s</sup> and the usual allow<sup>ce</sup> for Roads &c executed August ye 18<sup>th</sup> 1785 in Pursuance of a Warrant granted to Jos. Gillfillen for 400 acs dated Feby ye 18<sup>th</sup> 1785 & ret<sup>d</sup> particularly on said Warrant in consequence of an order from the Board of Property dated July ye 7<sup>th</sup> 1787 —

The same Survey is ret<sup>d</sup> for dn<sup>o</sup> Rearden O<sup>ss</sup> of Zachariah Davis on a warrant granted to said Davis for 400 acs dated ye 15<sup>th</sup> July 1785 —

Dan<sup>l</sup> Brodhead Esq<sup>e</sup> } D.Srs.  
 S.G.<sup>l</sup> }  
 Presley Nevill }  
 Matt<sup>w</sup> Ritchie }

IN TESTIMONY that the above is a copy of the original remaining on file in the Department of Internal Affairs of Pennsylvania, made conformably to an Act of Assembly approved the 16th day of February, 1833, I have hereunto set my Hand and caused the Seal of said Department to be affixed at Harrisburg, this second day of November 1904.

*James A. Brown*  
 Secretary of Internal Affairs.